



Smart Electric Neck And Shoulder Massager For Back Shoulder And Neck Pain

Our Product Introduction

For more products please visit us on electronicsmassager.com

Basic Information

- Place of Origin: Shenzhen, China
- Brand Name: GT
- Certification: CE, FCC, ROHS
- Model Number: GT-R2
- Minimum Order Quantity: 1000
- Price: \$16.1-19.1\$/unit
- Packaging Details: Carton, Customized Packaging
- Delivery Time: 5-25 work days
- Payment Terms: T/T, Western Union, Money Gram
- Supply Ability: 10000/month

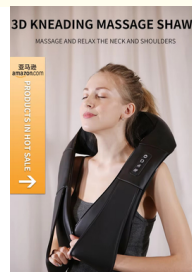
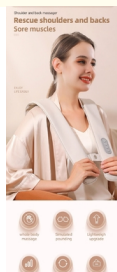


Product Specification

- Auto Shut-Off: Yes
- Massage Nodes: 8
- Weight: 2.5 Pounds
- Usage: Neck And Shoulder Massage
- Remote Control: Yes
- Color: Gray, Customized Color
- Intensity Levels: 3
- Heat Function: Yes
- Highlight: Smart Electric Neck And Shoulder Massager, Massager For Back Shoulder And Neck Pain



More Images



Product Description

Customized Color Neck and Shoulder Heating Massage Shawl with 3 Intensity Levels

Product Description:

The Massage Shawl offers 3 different Massage Modes, allowing you to customize your massage experience according to your needs. The modes include a Deep Tissue Massage Mode, a Medium Massage Mode, and a Gentle Massage Mode. This variety of modes ensures that you can get the perfect massage every time.

The usage of this product is simple and effective. The Wireless Shoulder and Neck Massage Cushion can be worn around your neck and shoulders, allowing you to enjoy a hands-free massage experience. The adjustable design of the cushion ensures that it can fit comfortably on any body type. Whether you are sitting at your desk, watching TV, or traveling, this product will provide you with the relief you need.

With a 2-year warranty, you can trust that this product has been built to last. The Wireless Shoulder and Neck Massage Cushion is made with high-quality materials that are designed to withstand daily use. This product is perfect for anyone who suffers from neck and shoulder pain or stiffness. The Massage Shawl is also great for anyone who wants to relax and de-stress after a long day.

Overall, the Wireless Shoulder and Neck Massage Cushion is a great investment for anyone who wants to improve their overall health and well-being. The adjustable design, 8 Massage Nodes, 3 Massage Modes, and 2-year warranty make this product one of a kind. Get your Wireless Shoulder and Neck Massage Cushion today and experience the relief and relaxation that you deserve.

Features:

Product Name: Massage Shawl

Power Source: AC Adapter

Weight: 2.5 Pounds

Usage: Neck And Shoulder Massage

Warranty: 2 Year

Massage Modes: 3

Electric Shoulder Massager for Neck and Back

Heated Neck and Shoulder Massage Blanket

Deep Tissue Neck and Shoulder Massaging Device

Technical Parameters:

Usage	Neck And Shoulder Massage
Auto Shut-Off	Yes
Color	Gray, Customized Color
Dimensions	15 X 15 X 5 Inches
Heat Function	Yes
Weight	2.5 Pounds
Warranty	2 Year
Size	One Size Fits All
Massage Nodes	8
Material	Soft Fabric

Applications:

The GT-R2 Massage Shawl is suitable for various occasions and scenarios, making it a great investment for personal and professional use. It is perfect for people who work long hours sitting at a desk, as it can help relieve the stiffness and pain that often come with this type of work. Additionally, it can be used after a workout or physical activity, as it can help loosen up tight muscles and promote faster recovery.

This product is also ideal for individuals who suffer from chronic neck and shoulder pain, as it can provide targeted relief to these areas. The heat function of the massage shawl enhances the experience by increasing blood flow and promoting relaxation. This feature makes it perfect for use during cold weather or when you need a little extra warmth and comfort.

The GT-R2 Massage Shawl is designed to fit all body types and sizes, making it a convenient option for people of all ages. The product is lightweight, weighing only 2.5 pounds, and comes with 8 massage nodes that can be adjusted to meet your specific needs. The shawl is easy to use and can be operated with a single button, making it a hassle-free and user-friendly option.

The GT-R2 Massage Shawl is CE, FCC, and ROHS certified, ensuring that it meets the highest quality standards. The product can be purchased in a minimum order quantity of 1000 units and is priced between \$16.1-\$19.1 per unit. The packaging details are customizable, and the product can be delivered within 5-25 work days. Payment can be made via T/T, Western Union, or Money Gram,

and the supply ability is 10000 units per month.

To sum up, the GT-R2 Massage Shawl is a high-quality and reliable product that provides an exceptional massage experience. Its versatility, convenience, and effectiveness make it suitable for various occasions and scenarios. Whether you need to relieve stress and tension or have chronic pain in your neck and shoulders, this heated neck and shoulder massage blanket can help you feel relaxed, refreshed, and rejuvenated.

Customization:

Made in Shenzhen, China, our massage shawl is of the highest quality and comes with CE, FCC, and ROHS certification. The minimum order quantity is 1000 units and the price ranges from \$16.1-19.1 per unit. The packaging details can be customized and will be delivered in a carton. The delivery time is 5-25 work days and we accept payment through T/T, Western Union, and Money Gram. Our supply ability is 10000 units per month.

Our GT-R2 massage shawl is powered by an AC adapter and has three different massage modes. It comes in a sleek gray color but can also be customized to fit any color preference. The one size fits all design ensures that anyone can use it for a neck and shoulder massage.

Don't miss out on the ultimate relaxation experience with our GT-R2 Multifunctional Neck and Shoulder Massaging Shawl. Order now and feel the stress melt away!

Support and Services:

The Massage Shawl is a versatile and easy-to-use product that provides a deep tissue massage experience in the comfort of your own home. It is equipped with adjustable straps to fit any body shape, and offers multiple massage modes and intensities to cater to different needs and preferences.

Our product technical support team is available to assist with any questions or issues you may encounter while using the Massage Shawl. We also offer a one-year warranty for the product, which covers any defects in material or workmanship.

In addition, we provide a range of services to enhance your experience with the Massage Shawl. Our website includes detailed user manuals, instructional videos, and FAQs to help you get the most out of your product. We also offer a 30-day return policy for any reason, so you can purchase with confidence.

Packing and Shipping:

Product Packaging:

The Massage Shawl will be carefully packaged in a sturdy cardboard box to ensure safe delivery to your doorstep. The box will also include instructions on how to use the shawl and take care of it.

Shipping:

We offer free shipping for the Massage Shawl within the United States. We will process and ship your order within 1-2 business days. Depending on your location, delivery may take 3-5 business days.

FAQ:

Q1: What is the brand name of this massage shawl?

A1: The brand name of this massage shawl is GT.

Q2: What is the model number of this massage shawl?

A2: The model number of this massage shawl is GT-R2.

Q3: Where is this massage shawl made?

A3: This massage shawl is made in Shenzhen, China.

Q4: What certifications does this massage shawl have?

A4: This massage shawl has CE, FCC, and ROHS certifications.

Q5: What is the minimum order quantity for this massage shawl and what is the price range?

A5: The minimum order quantity for this massage shawl is 1000 units and the price range is \$16.1-\$19.1 per unit.

gotole Shenzhen Zhizun Industrial Co., Ltd.



+8613828753486



szgotolesq@163.com



electronicsmassager.com

Room 301,3rd Floor, Office Building 16, Zhongpengcheng Industrial Park., No.3 Zhenxing Road, Matian Street,518107,Guangming District, Shenzhen,Gongdong. China.